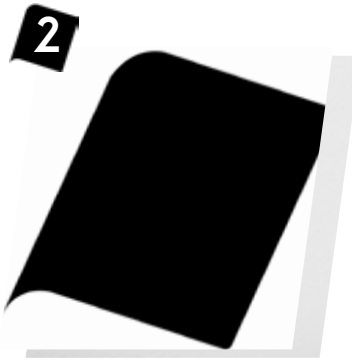


### FASTENS ONTO A 1/2" DIAMETER LUGGAGE RACK BAR

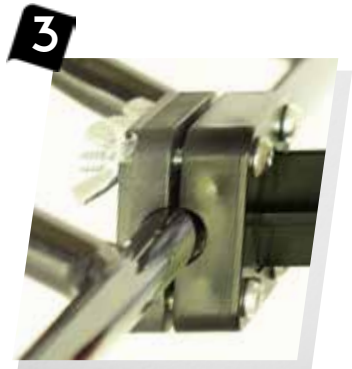
Mounting Hardware: pre-installed with 4 bolts, 4 wing nuts, and 4 washers, 1 mast (flag pole), 1 top connector, and 1 bottom connector.



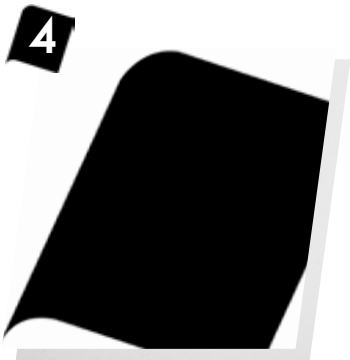
1  
Disconnect the parts.



2  
Place the top connector/  
mast over the desired  
bar, resting the flag on a  
side.



3  
Place bottom connector  
under bar, making sure  
bar slots into round base.



4  
Insert first bolt through  
one of the top holes and  
secure washer and wing  
nut, hand-tightened.



5  
Repeat with remaining 3  
bolts, washers and wing  
nuts.



6  
Rotate LumiFlag to a  
straight upright position  
and further tighten. If  
desired use a Phillips-  
head screwdriver on  
the bolt to avoid lateral  
movement of the flag.